

Name: _____

Section: _____

Teacher: _____

Date: _____

SUMMER WORD SEARCH

Look for the words listed below.

S	U	N	W	A	N	P	U	A
U	S	B	A	E	I	P	L	H
N	H	T	T	W	C	L	S	O
B	E	N	E	U	E	A	A	T
L	L	W	R	R	D	Y	N	N
O	L	N	B	O	T	S	D	F
C	A	M	B	E	A	C	H	U
K	U	W	A	V	E	S	C	N
P	I	N	E	A	P	P	L	E



Sun
Sunblock
Play

Waves
Hot
Sand

Fun
Beach
Shell

Pineapple
Water
Umbrella

TORNADO FACT FILE

Destructive and fast spinning funnel-shaped wind that stretches from a thunderstorm to the ground.

Tornadoes are also called twisters. They are distinguished from tropical storms such as cyclones, typhoons and hurricanes due to their twisting nature.

The majority of the world's tornadoes occur in the United States of America, during spring time.



CAUSES

Scientists aren't exactly sure how or why tornadoes form, but do know that they come from supercell storms that have strong updrafts (rising warm air).



DURATION

Tornadoes can last for a few seconds up to an hour.

Tornadoes can be so powerful that they can uproot trees, lift cars and tear roofs off houses.



A tornado over water is called a waterspout.

SIZE

The diameter of a tornado can be as small as a few meters to over a kilometer wide.



SPEED

Tornadoes can reach speeds of up to 480kms per hour!

The speed of the tornado determines its classification using the 6-point Fujita scale, where F0 is the weakest, and F5 the strongest wind speeds.

Name: _____

Date: _____

Food Scramble

Unscramble the letters, write the word down
and connect to the correct **Food** element



PEAPL

APPLE



EOLTEEMT



AMTOTO



SACNTRSIO



RGEAON



AOCNB



OTOHGD



IEP



SBANAAN



SCOIEKO

Name: _____

Date: _____



ANIMAL WORD SEARCH

Circle words in the puzzle below

E	L	E	P	H	A	N	T	P
S	G	M	E	K	O	A	L	A
L	I	O	N	N	C	L	A	N
B	R	N	F	U	D	H	N	D
E	A	K	O	R	W	O	T	A
A	F	E	M	U	I	A	G	E
R	F	Y	C	H	E	R	D	Y
Z	E	B	R	A	D	E	E	R
P	I	N	T	I	G	E	R	W

dog	monkey	emu	deer
tiger	lion	zebra	koala
elephant	panda	bear	giraffe

Name: _____

Date: _____

Zoo Scramble

Unscramble the letters, write the word down
and connect to the correct zoo animal



KOMNEY

MONKEY



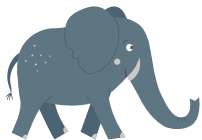
IOLN



EGRTI



EMULR



LDOEOICCR



HOSLT



HCNEOLAME



NLEETHPA



IOHPP



AREBZ

NAME

TEACHER

CLASS

DATE

LETTER MIX-UP!

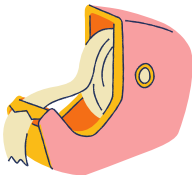
Unscramble the letters to spell the words correctly



c k l c o



o l b e g



a t p e



s o e s h



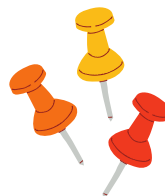
n t a i p



a l e d m



p l p e a

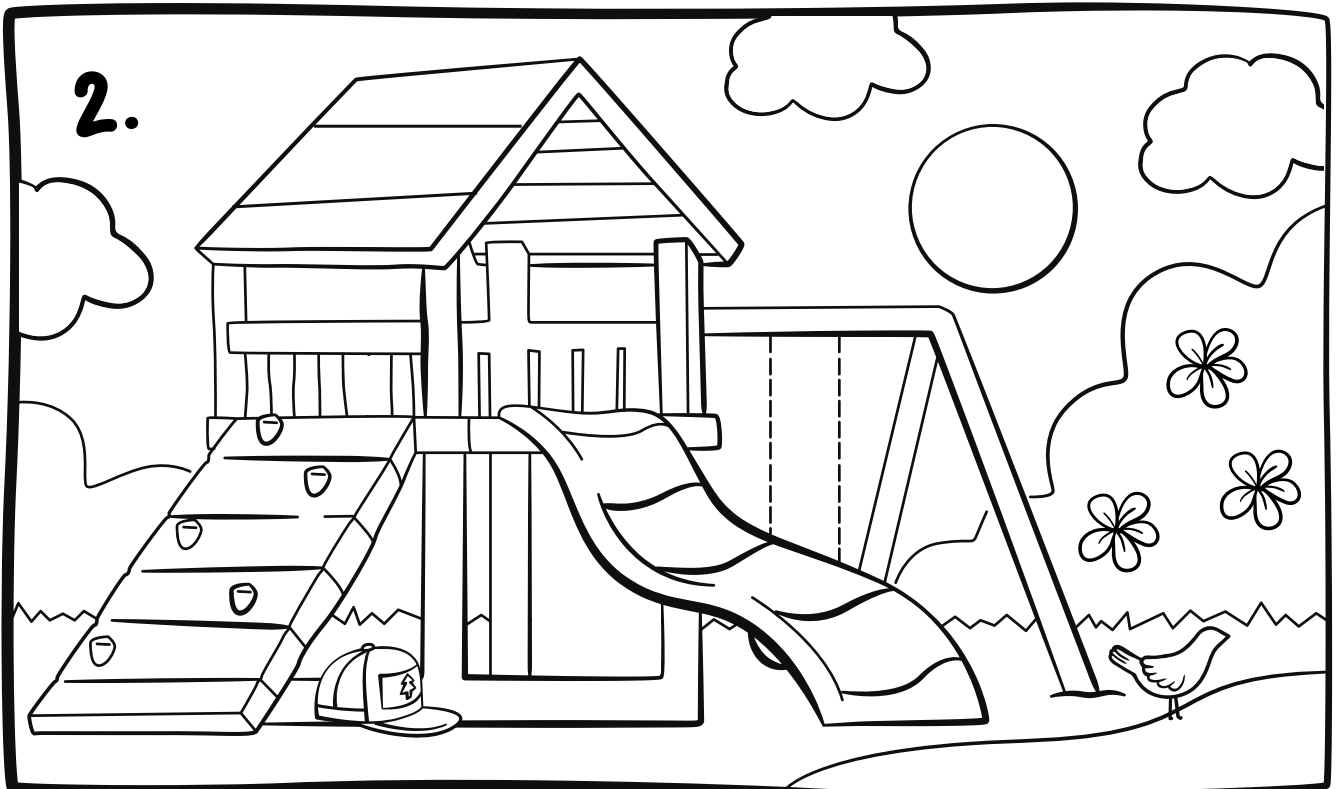
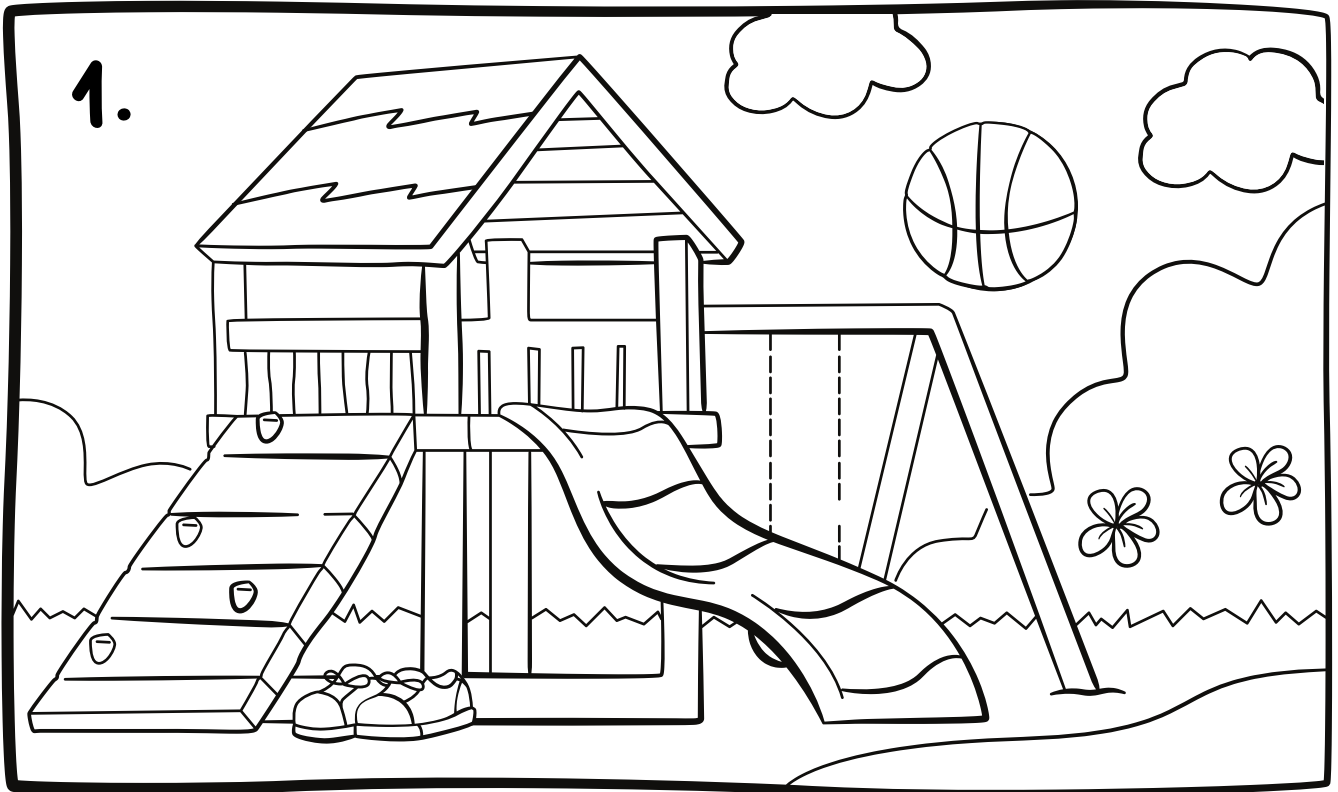


s i p n

NAME: _____

SPOT THE DIFFERENCE

COLORING SHEET



Name _____

Date _____

Class _____

Score _____

English Rhyming Words

Directions: Circle the word that rhymes with the word on the left.

Great

Bread

Plate

Dead

Speak

Leak

Crate

Fake

Tell

Girl

Limp

Sell

Hand

Man

Land

Barn

Grow

More

Far

Flow

Wrap

Trap

Path

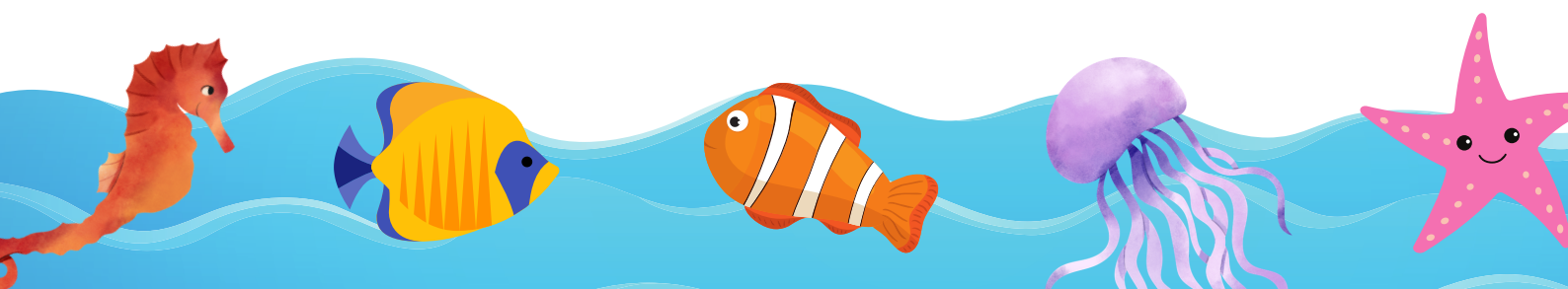
Lamp

Far

Shore

War

Door

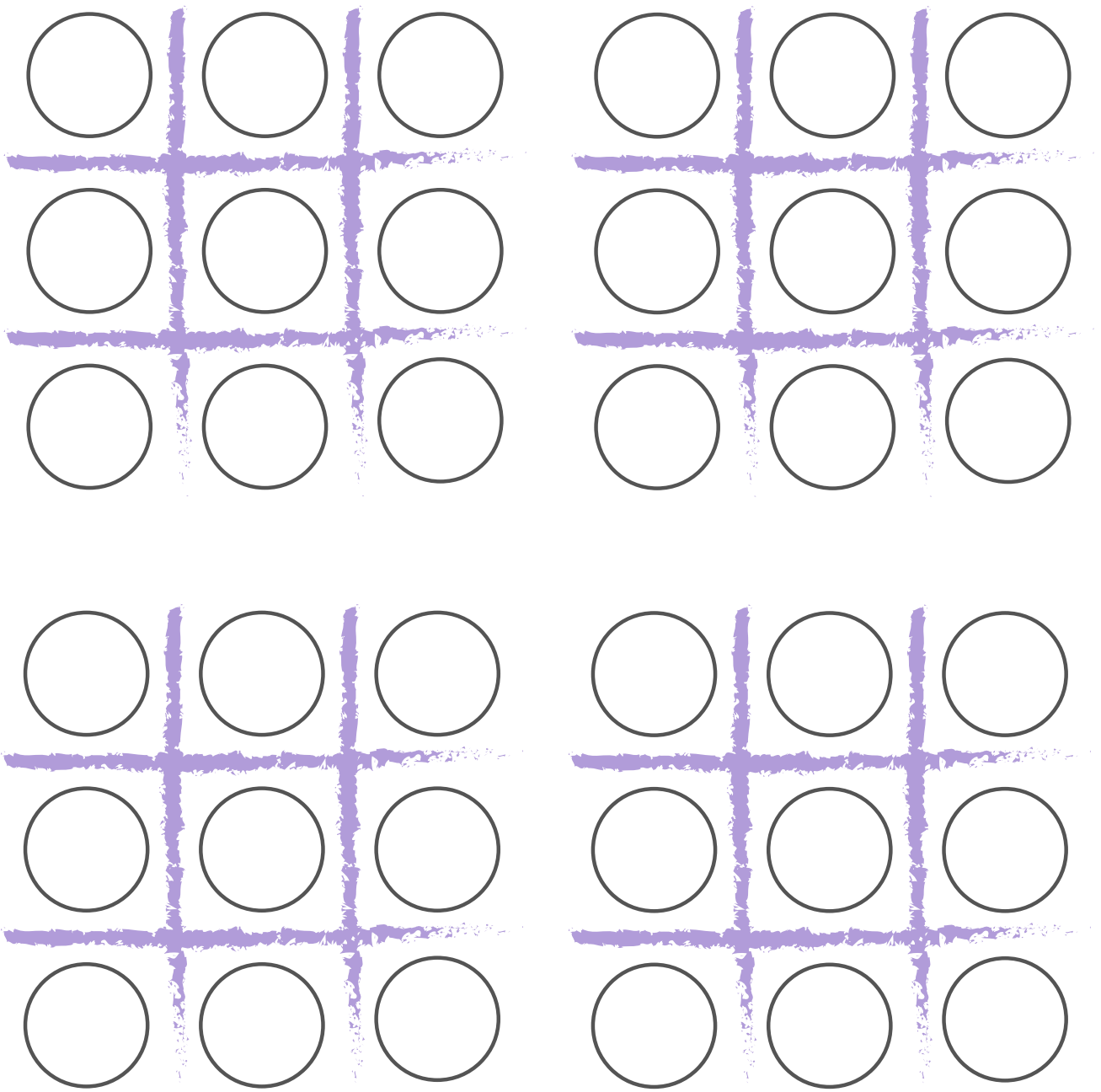


Name: _____

Date: _____

Tic Tac Toe

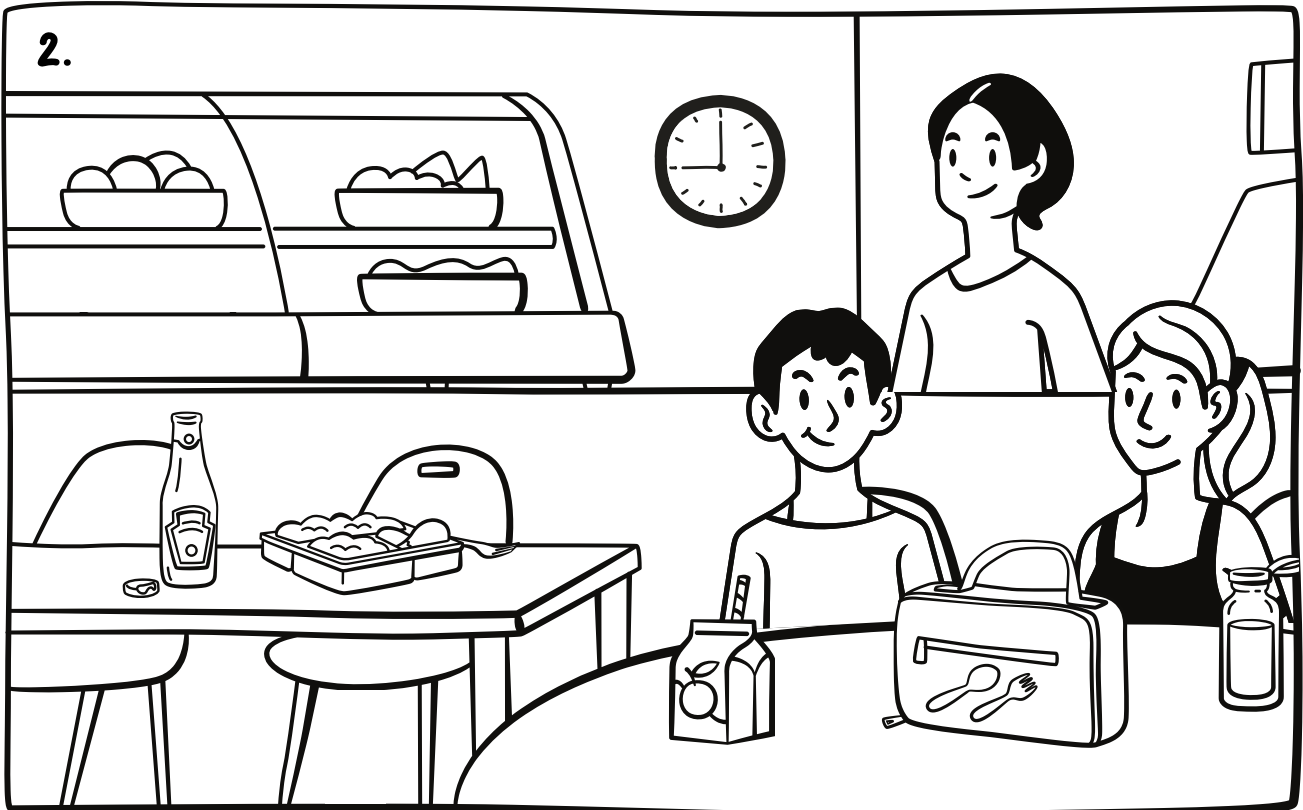
Do-a-Dot game for two. Take turns marking a dot, the player with three dots in a row wins.



NAME: _____

SPOT THE DIFFERENCE

COLORING SHEET



Name: _____

Date: _____



SPACE WORD SEARCH

Circle words in the puzzle below

E	Q	D	L	H	W	N	T	P
S	A	M	O	O	N	A	O	M
U	L	R	N	N	C	L	R	E
N	U	S	T	A	R	S	B	R
E	N	A	O	H	W	O	I	C
A	A	T	M	A	R	S	T	U
R	R	U	C	O	M	E	T	R
Z	G	R	A	V	I	T	Y	Y
V	E	N	U	S	G	E	R	W

earth

stars

venus

comet

sun

mars

mercury

orbit

moon

saturn

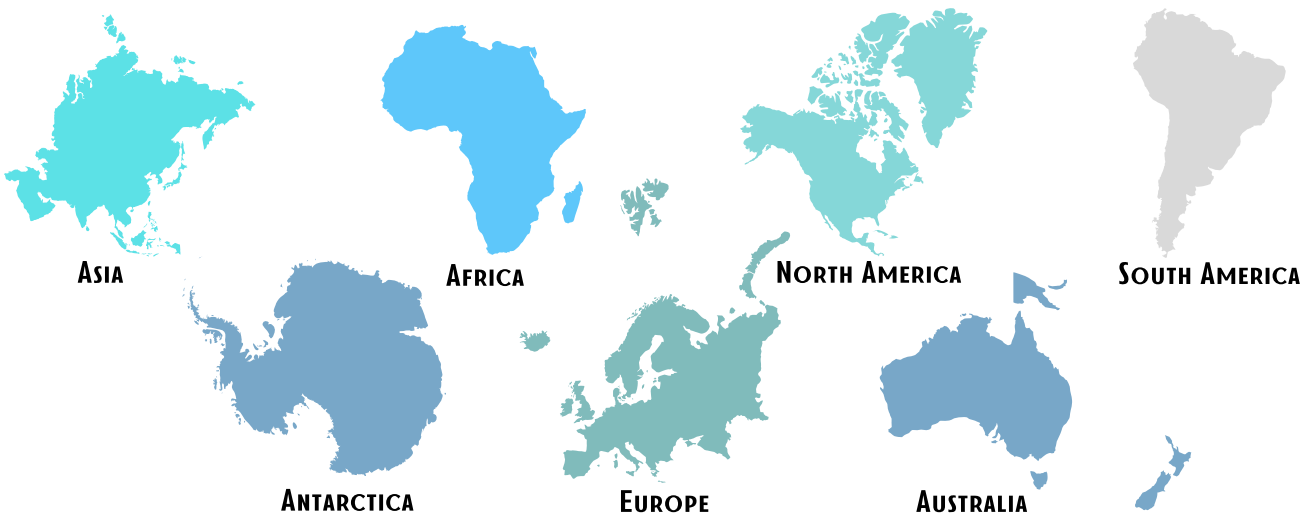
gravity

lunar

CONTINENTS FACT FILE

Continents are large expanses of land, separated by ocean.

Earth has seven continents.

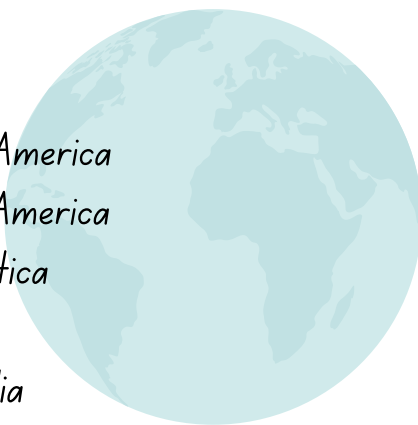


SIZE

Largest



Asia
Africa
North America
South America
Antarctica
Europe
Australia



Smallest

FORMATION

Continents sit on large tectonic plates which are moving solid rocks on the earth's outer layer.

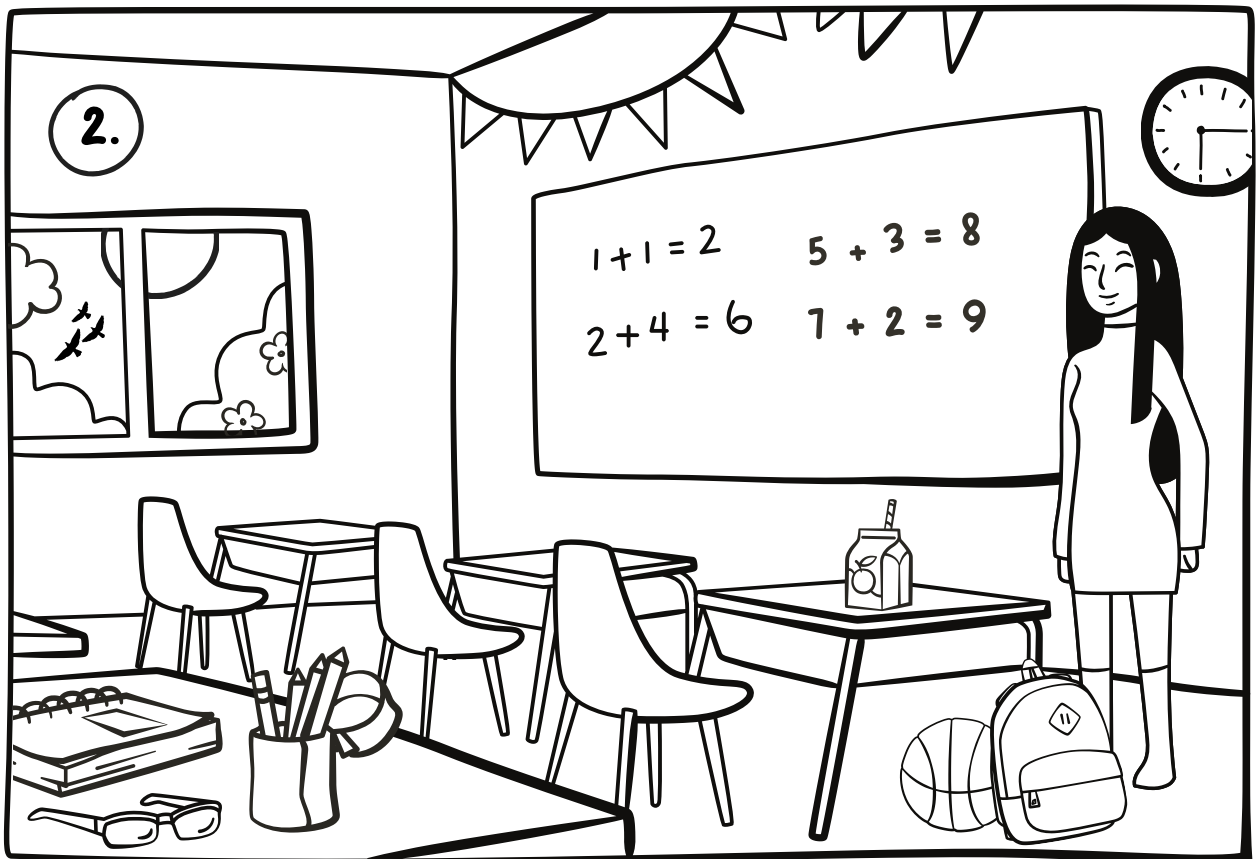
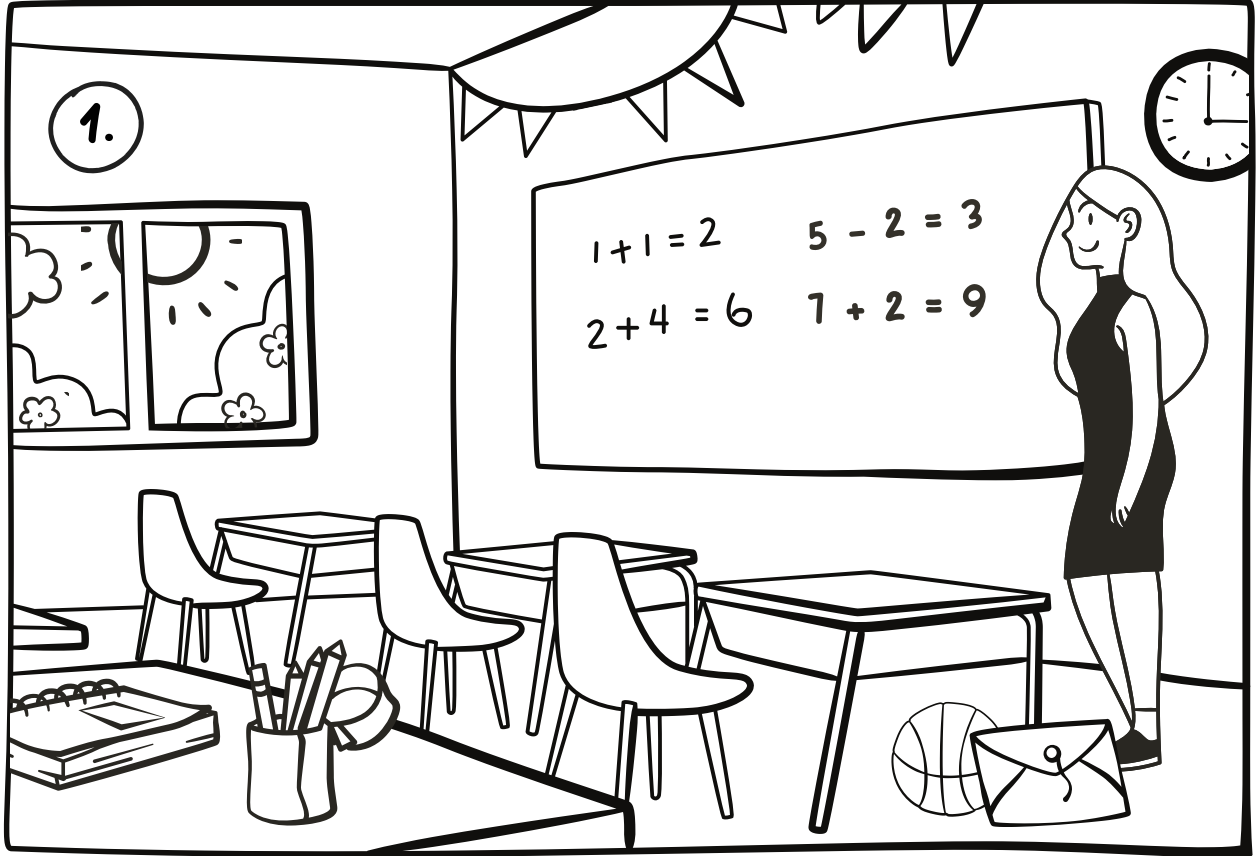
FUN FACTS

- Deserts are found on every continent.
- Australia is the only continent that is also a whole country. 
- Ocean area is more than double the combined area of all the continents. 
- Africa is the continent with the most countries - 54 in total!
- 300 million years ago, earth was one giant continent called Pangaea.

NAME: _____

SPOT THE DIFFERENCE

COLORING SHEET



Name: _____

Date: _____



ENERGY SOURCES WORD SEARCH

Circle words in the puzzle below

E	N	E	R	G	Y	N	T	W
S	U	L	O	A	N	A	I	A
O	C	E	I	S	C	L	D	T
L	L	C	L	A	R	S	A	E
A	E	T	O	H	W	O	L	R
R	A	R	M	A	R	I	T	R
R	R	I	C	O	A	L	N	A
Z	G	C	H	E	A	T	Y	D
C	H	E	M	I	C	A	L	W

energy

solar

wind

heat

coal

gas

nuclear

tidal

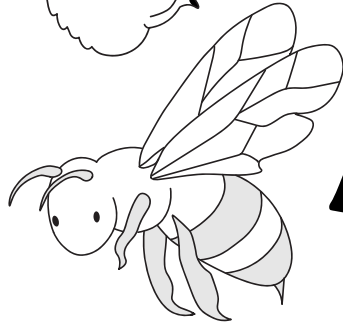
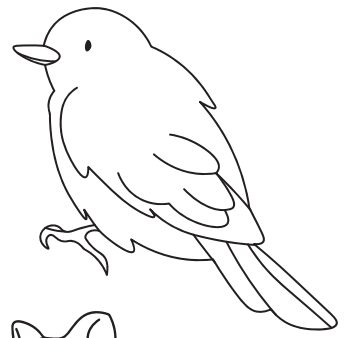
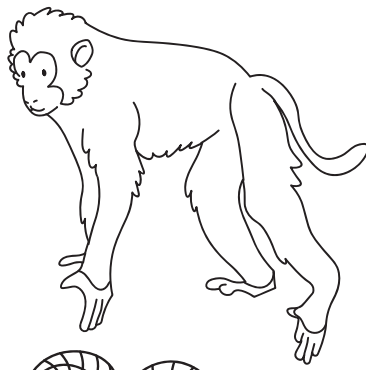
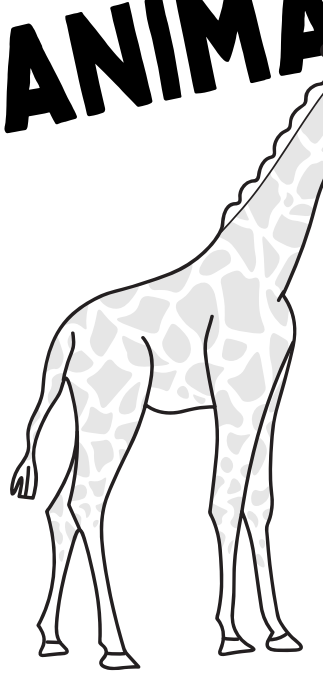
chemical

water

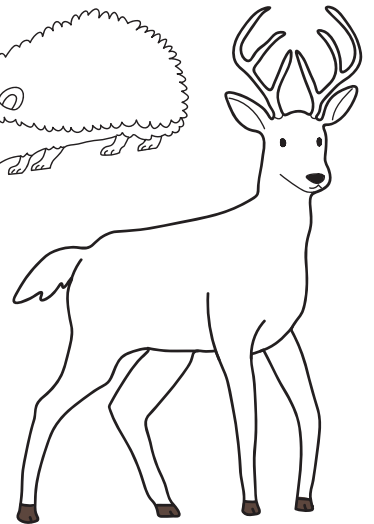
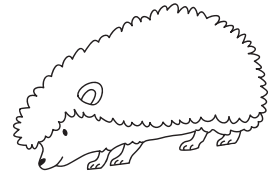
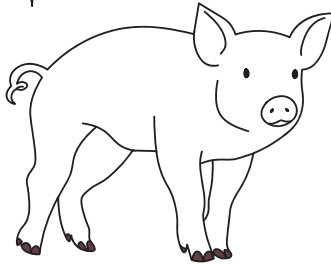
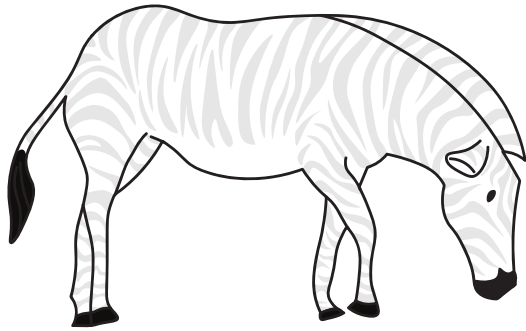
electric

oil

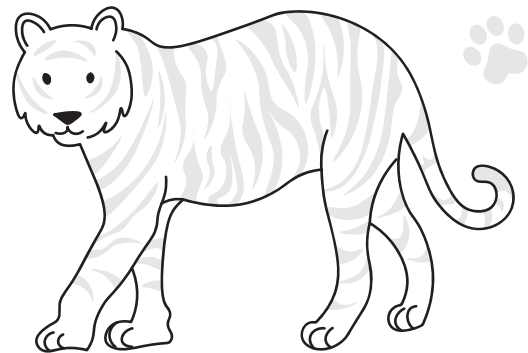
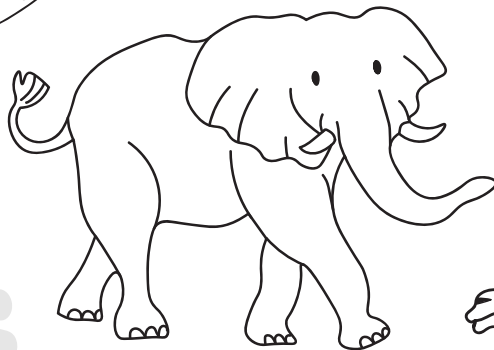
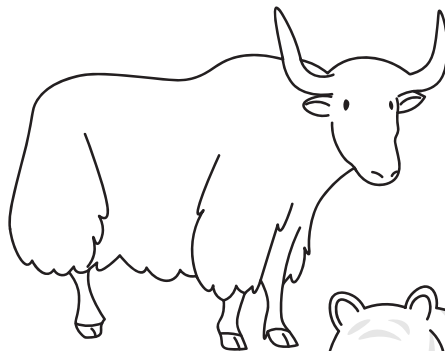
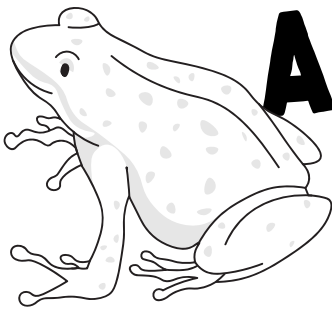
ANIMALS



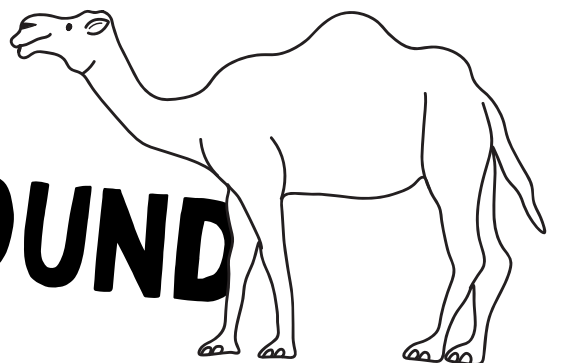
ARE



ALL



AROUND



THE AMAZON FACT FILE

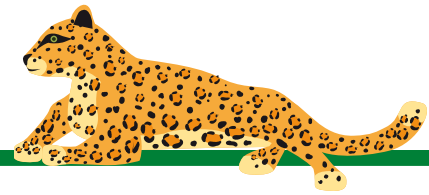
The amazon jungle is the world's largest tropical rainforest, located in South America, and spanning over eight countries.



The Amazon is called the lungs of the earth because it produces more than 20% of the world's oxygen supply - thanks to all those trees!

LAYERS

Emergent	Top of the tallest trees
Canopy	Top of the shorter trees
Understory	Between the canopy and the forest floor
Forest Floor	Dark and cool ground level layer.



ANIMALS

1 in 10 species worldwide are found in the amazon.

BIRDS

1,300 + bird species.



PLANTS

More than 40,000 different kinds of plants.



SIZE

5.5 million square kilometres.

PEOPLE

Around 400 Indian tribes live in the Amazon rainforest, each with their own language and culture.



Sight Word Activities

PURPLE WORDS

Trace the following words:

again

ask

best

bring

far

find

give

mother

Write the following words on the line below:

kind

left

man

how

Find your sight words in the find-a-word below. Tick them off as you find them:

k	t	p	e	r
l	o	o	s	o
a	o	t	e	o
w	i	s	h	m
s	a	y	t	h

room

say

stop

these

too

wish

walk

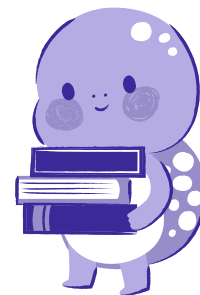
Name: _____

Section: _____

Date: _____

Score: _____

Opposite words



Draw a line to match the word on the left to its opposite.

wet ●

● slow

hot ●

● many

long ●

● hard

fast ●

● dry

dark ●

● bright

soft ●

● short

smooth ●

● old

young ●

● rough

few ●

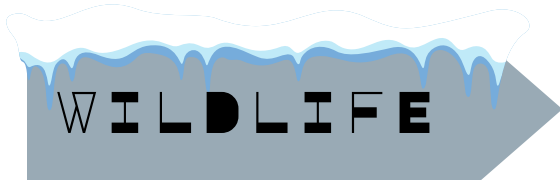
● cold

ANTARCTICA FACT FILE

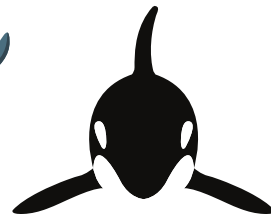
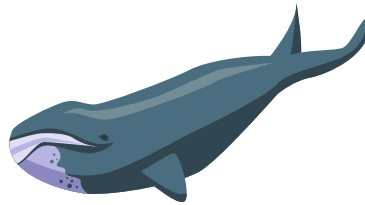
Antarctica is an icy landmass located at the South Pole. It is a continent, not a country, and is used for scientific conservation.

Meaning: In Greek, 'antarktikē' = opposite to north.

No form of government and no Indigenous population.



Most of the animal life in Antarctica are seasonal as it's too cold to live there during winter.



CLIMATE

- Coldest, driest and windiest continent on earth.
- 99% of Antarctica is covered in snow and ice. 1% is rocky outcrops.
- Antarctica is a desert. It has very little snow and rainfall.
- Antarctica has only two seasons: Summer and Winter

No trees or bushes.



Ice depth averages 2km thick in East Antarctica.

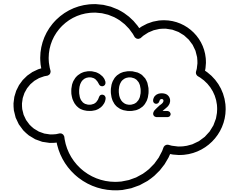


SIZE

It is the 5th largest continent.

Area: 14.2 million square kms

Find-a-word



STATES OF MATTER

S	O	L	I	D	S	I	N	S	Q	S
C	O	O	L	I	N	G	M	N	Y	D
E	R	A	R	G	M	F	P	B	F	I
A	G	I	M	A	A	O	E	T	U	U
D	A	R	T	S	T	S	A	N	N	Q
E	S	E	A	S	T	A	T	E	I	I
T	E	A	W	Q	E	I	E	M	W	L
L	S	T	A	O	R	L	U	I	I	O
E	L	E	Z	G	N	I	T	A	E	H
M	S	E	L	C	I	T	R	A	P	P
A	T	O	M	S	E	G	N	A	H	C

Instructions: Find the underlined words in the above find-a-word:

Everything - including you - is made of matter. Matter is made up of tiny particles called atoms. On earth, matter comes in three forms: solids, liquids and gases. Through heating and cooling, matter can change its state. Ice is a solid, but when it is melted, it becomes a liquid (water). Heating liquid turns it into a gas (water vapour).

MOONfacts

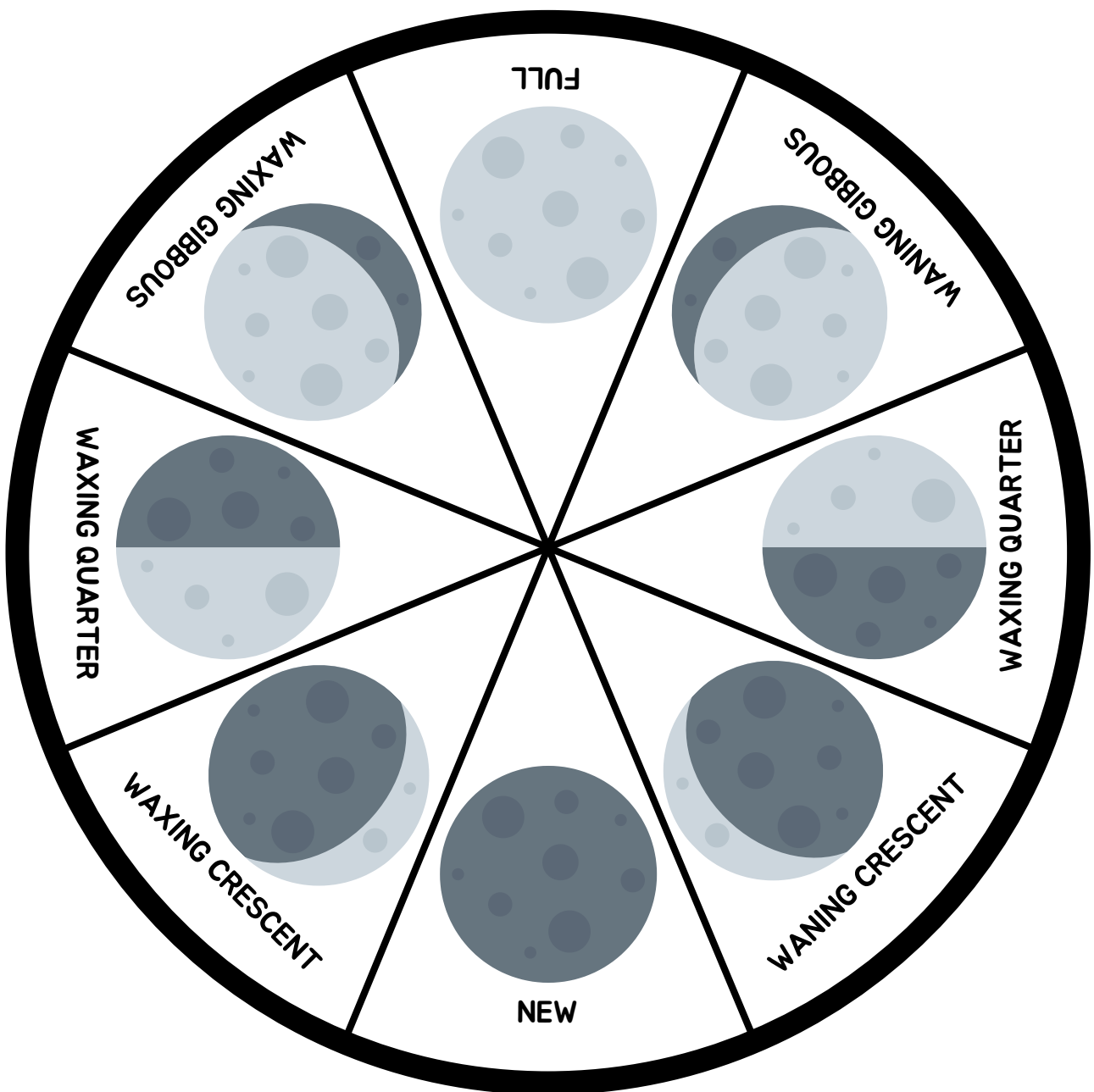
- The moon does not emit light, what we see is _____ reflecting off the moon
- It takes around _____ days for the phases of the moon to complete a cycle
- The moon circles the _____
- When we can't see any of the lit up side of the moon it is called a _____
- After a new moon we begin to see more of the moon this is called _____

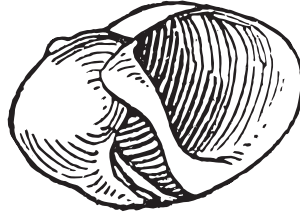
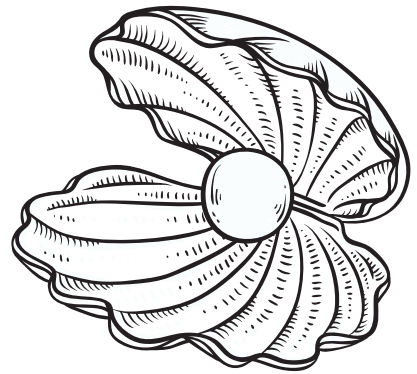
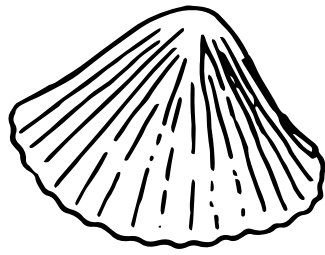
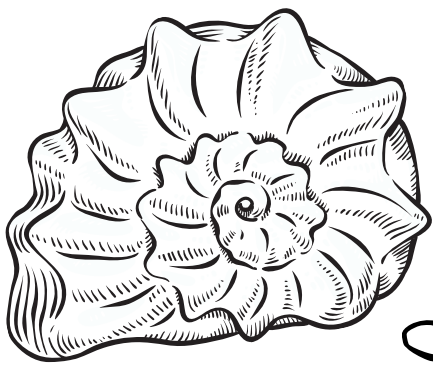


MOON Lunar Cycle

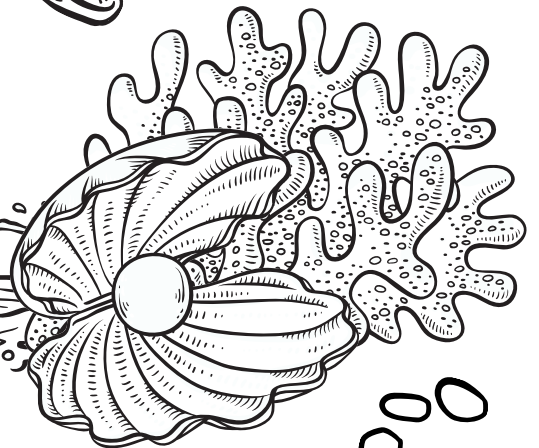
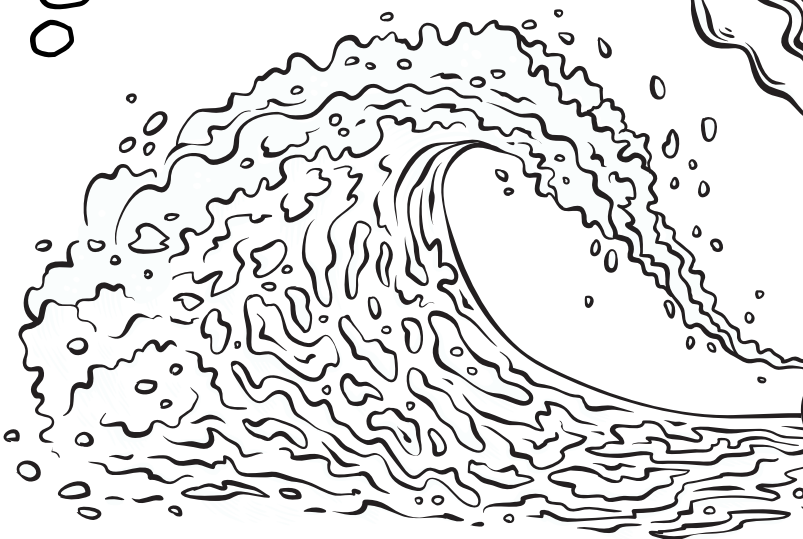
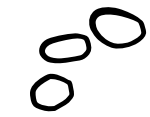
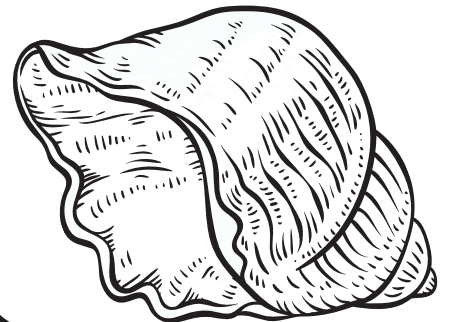
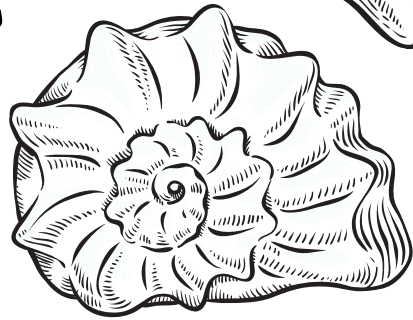
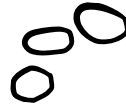
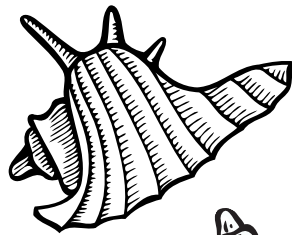


Cut both circles out, attach them together through the center with a metal fastener.





*Let's find seashells
by the sea shore!*



RAINFOREST FACT FILE

Rainforests are wet, humid evergreen forests with a high amount of annual rainfall (more than 180cm).



Humidity



Temperature



Rainfall

Two types: Tropical: High temperatures + Temperate: Milder temperatures

LIFE

Rainforests are home to more than half of the world's plants and animal species.



LOCATION

Rainforests are found on every continent except Antarctica, and are located around the centre of the earth - the equator, where it is generally warm in temperature.

LAYERS

- Emergent
- Canopy
- Understory
- Forest floor

Human development has destroyed more than half of the earth's rainforest covering - from 14% to 6% (3 million square miles).

DID YOU KNOW?

- The largest rainforest in the world is the Amazon Rainforest in South America, followed closely by the Congo River in Africa.



- Rainforests produce 20% of the world's oxygen.



Name: _____ Date: _____

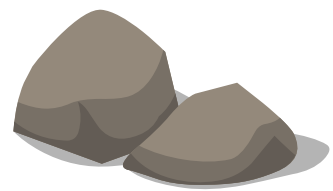
STATES OF MATTER

Draw a line to match each item to the correct state of matter:

Solid



Liquid



Gas



Ice Cream Dreams

COLORING ACTIVITY

